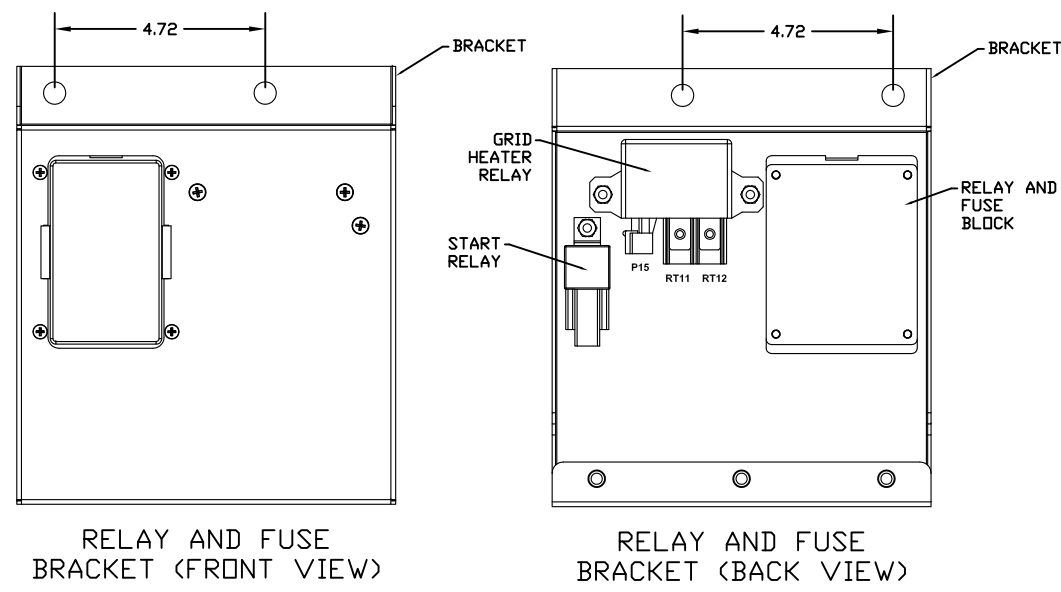
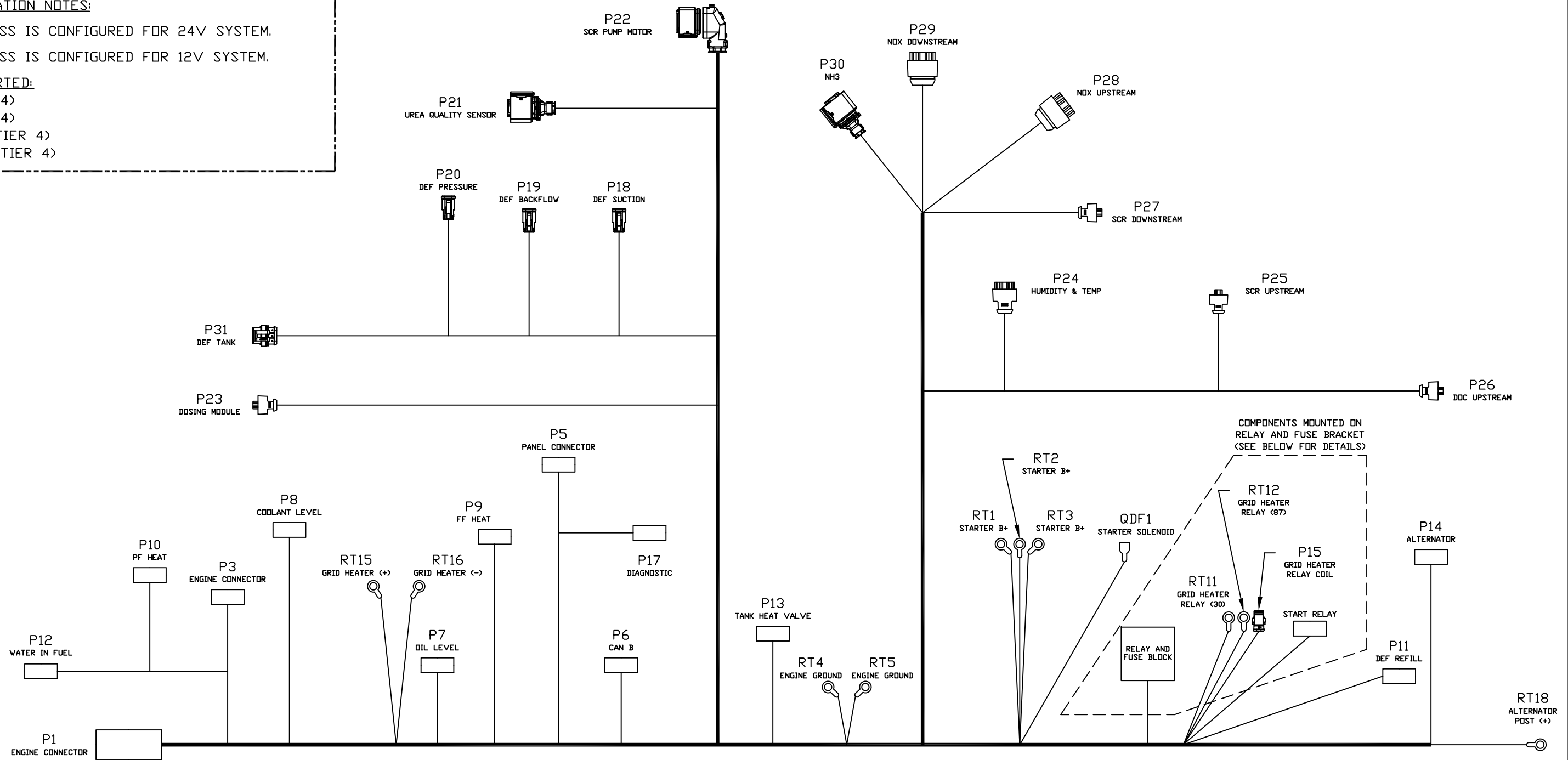


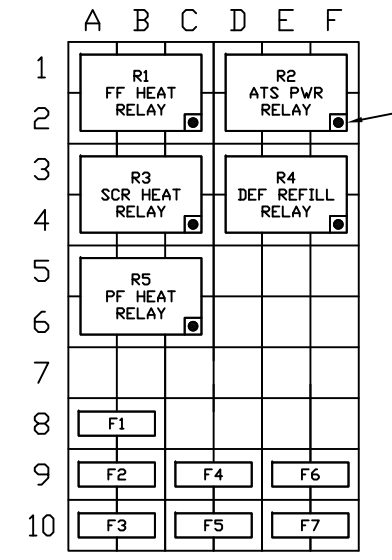
HARNESS CONFIGURATION NOTES:

1. 32000212 HARNESS IS CONFIGURED FOR 24V SYSTEM.
2. 32000216 HARNESS IS CONFIGURED FOR 12V SYSTEM.
3. ENGINES SUPPORTED:
 - A. NEF4 (TIER 4)
 - B. NEF6 (TIER 4)
 - C. CURSOR 9 (TIER 4)
 - D. CURSOR 13 (TIER 4)



FUSE	DESCRIPTION
F1	5 DIAGNOSTIC
F2	30 ECU
F3	15 PF HEAT
F4	15 FF HEAT
F5	10 DEF REFILL
F6	30 ATS POWER
F7	20 SCR HEAT

RELAY AND FUSE BLOCK



REV	CHANGES MADE
MURPHY <small>by an Emerson company</small>	
DRAWN BY: MR	E.R.NO. IPD
DATE: 02/12/20	CHKD. BY: AU APPD. BY: AU
MODEL: CUSTOMER WIRING MIH-FPT-96P-FT4	
DRAWING NO. SHEET 1 OF 1	SIZE REV.
32-13-0097	D A